

Agneta Granström

County Council Commissioner, (Norrbotten,
Sweden)

Chairperson of the AER e-he@lth network

Using Structural Funds for eHealth - the case of Norrbotten County



The county of Norrbotten

- an exciting part of Europe

- **Area: 98 911 km²**
 - (25 % of Sweden's total area)
- **Population: 251 886**
 - (2,8 % of Sweden's population)
- **Municipalities: 14**
- **Structural fund regions:**
 - North Sweden, Northern Finland, Northern Norway, North-western Russia and Sápmi
- **High speed net: Lumiora**



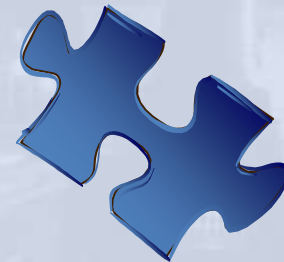
Our vision, our motto...



Growth Areas

- Test operations, space, automotive etc
- Creative industries, tourism, media, design, culture etc
- Basic industries and processing
- Technology, eHealth, innovations, ICT etc
- Energy and environmental technologies

Visionaries



Triple Helix

public sector, enterprise and
(in our case)

Luleå University of
Technology

Development cycle

- an ongoing process



- 2000
- 2001
- 2002
- 2003
- 2004
- 2005
- 2006
- 2007
- 2008
- 2009
- 2010
- 2011
- 2012
- 2013

A care-smart region

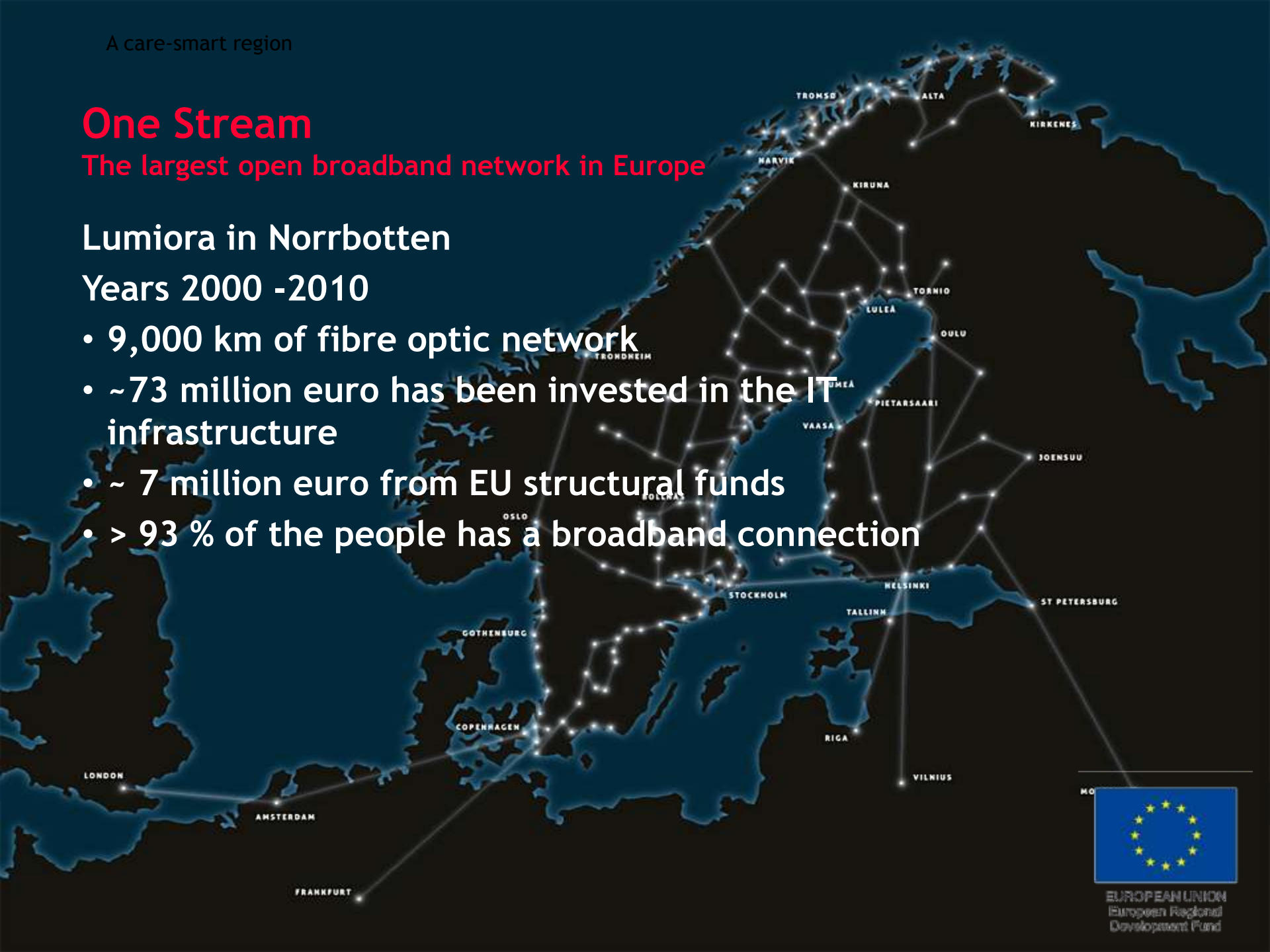
One Stream

The largest open broadband network in Europe

Lumiora in Norrbotten

Years 2000 -2010

- 9,000 km of fibre optic network
- ~73 million euro has been invested in the IT infrastructure
- ~ 7 million euro from EU structural funds
- > 93 % of the people has a broadband connection



EUROPEAN UNION
European Regional
Development Fund

Cross-border Healthcare in Torne Valley (Sweden/Finland)

Aims to

Develop and deepen the healthcare cooperation between healthcare providers in Torne Valley in order to create high quality cross-border care

Benefits for patient

- Access to cross-border healthcare
- High quality of care regardless of workplace or place of residence

Benefits for the region

- Better utilization of resources
- Improvement of existing collaboration
- Better information flow between healthcare providers in the region



Partners

Partners

Healthcare centres in Sweden and Municipalities and their care centres in Finland

Funding

- ~ 800 000 Euro - EU Structural funds
- ~ 540 000 Euro - Regional funding

A care-smart region

Regionalization of medical training At Sunderby Hospital - A vital future for the entire county

Medical regionalization of medical school at Umeå University to the Norrbotten, Jämtland and Västernorrland counties (4 places)



Partners

Funding

- ~ 95 000 Euro - EU Structural funds
- ~ 95 000 Euro - National funding



The structural Funds

As we look upon them



- ... **our contribution** to other regions in the EU
- ... we also **like to share** knowledge and experiences with others



Partnerships



An acceptance between the parties - a joint agreement

Formal Structures

- Political Structure
 - Partnerships
- Structural Funds

Informal Structures

- Networks
 - Preparatory
- Working groups
 - etc



The challenge for the public sector is to create conditions that stimulates growth

- Visionary humans
 - Development cycle
 - Partnerships
 - Growth areas
 - ICT Infrastructure
 - Policies and strategies
 - Development funds
 - Triple Helix
-
- eHealth as a part of the growth policy and therefore a part of the sustainable development





Thank you!

